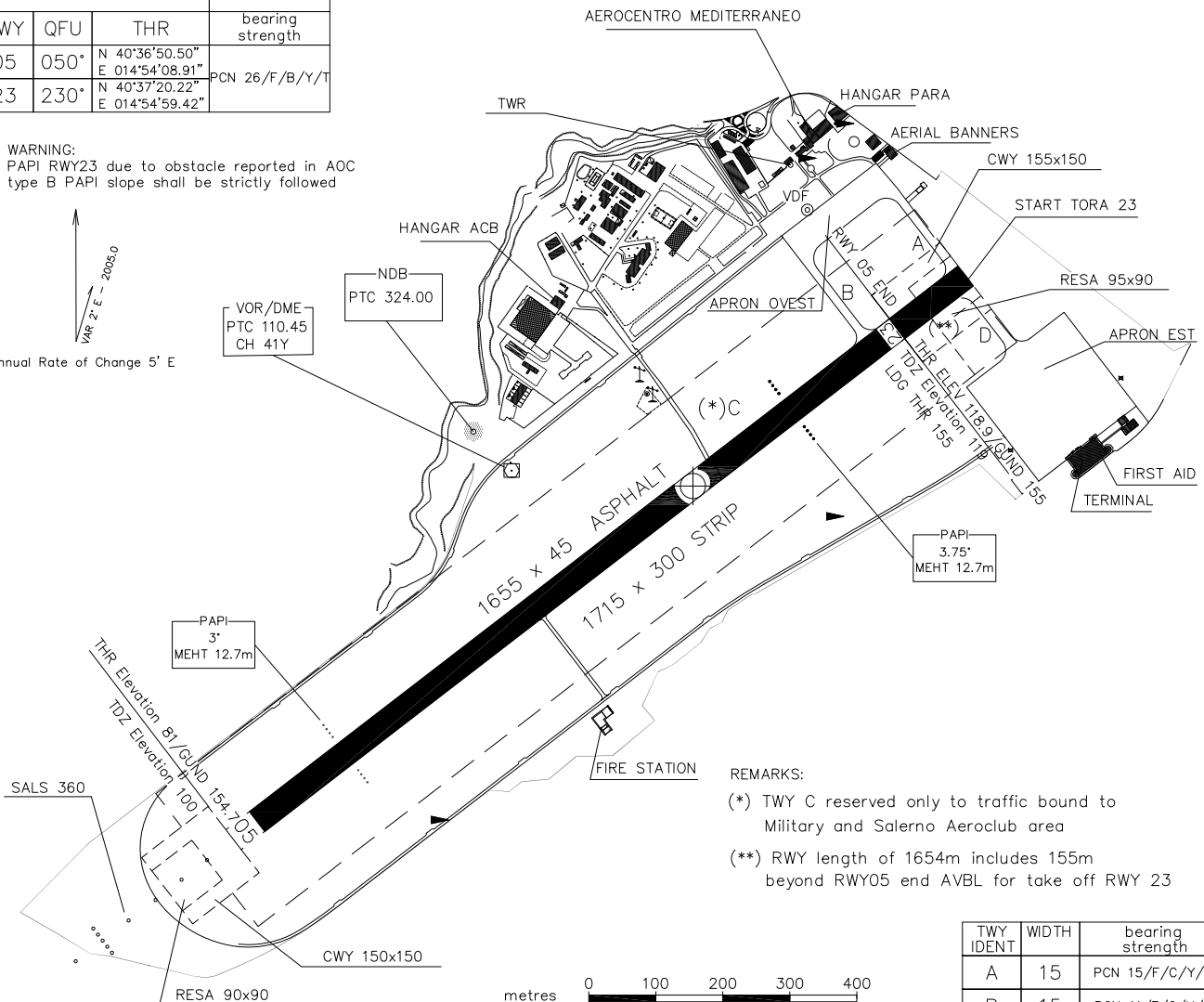


Bearings are magnetic Distances in metres Elevation in ft AMSL Coordinates WGS 84	AFIS 119.175	AD ELEV 119	SALERNO/Pontecagnano	
		APRON ELEV 123	L I R I	40°37'12" N 014°54'45" E

RWY	QFU	THR	bearing strength
05	050°	N 40°36'50.50" E 014°54'08.91"	PCN 26/F/B/Y/T
23	230°	N 40°37'20.22" E 014°54'59.42"	

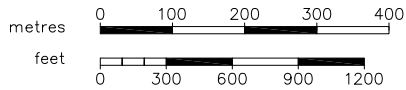
WARNING:  
PAPI RWY23 due to obstacle reported in AOC  
type B PAPI slope shall be strictly followed

VAR 2° E - 2008.0  
Annual Rate of Change 5' E

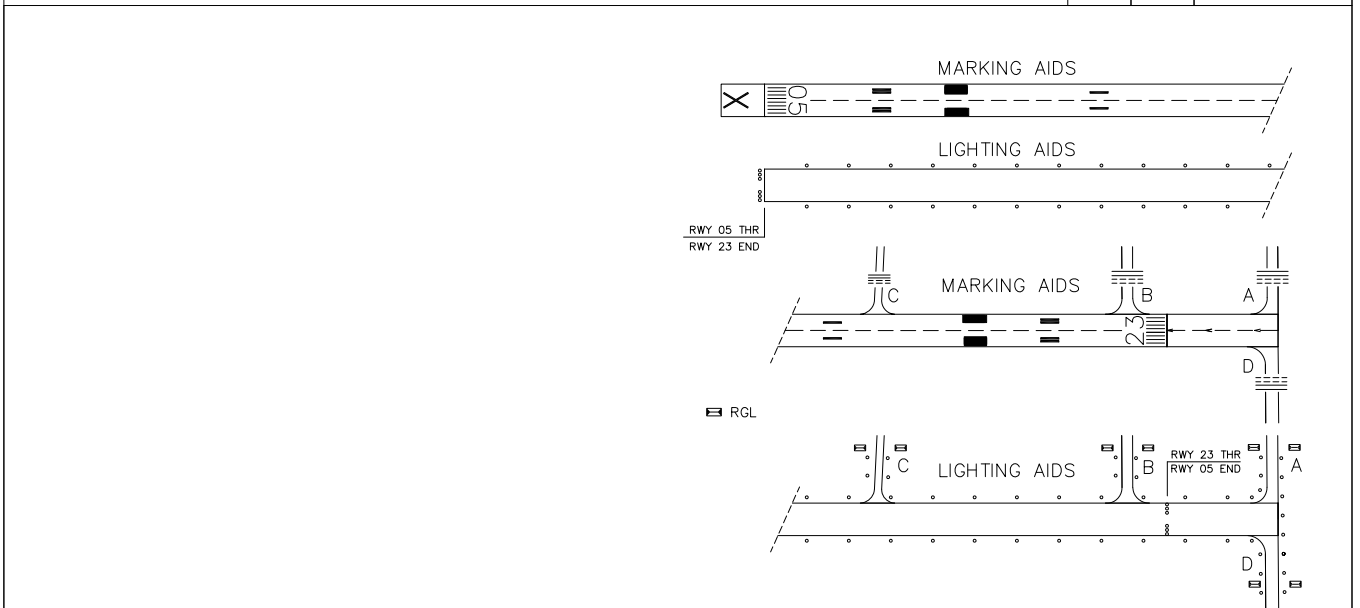


REMARKS:  
(\* ) TWY C reserved only to traffic bound to Military and Salerno Aeroclub area  
(\*\* ) RWY length of 1654m includes 155m beyond RWY05 end AVBL for take off RWY 23

TWY IDENT	WIDTH	bearing strength
A	15	PCN 15/F/C/Y/T
B	15	PCN 11/F/C/Y/T
C	10	PCN 12/F/C/Y/T
D	18	PCN 36/F/B/Y/T



CHANGE: Data provider and updated chart

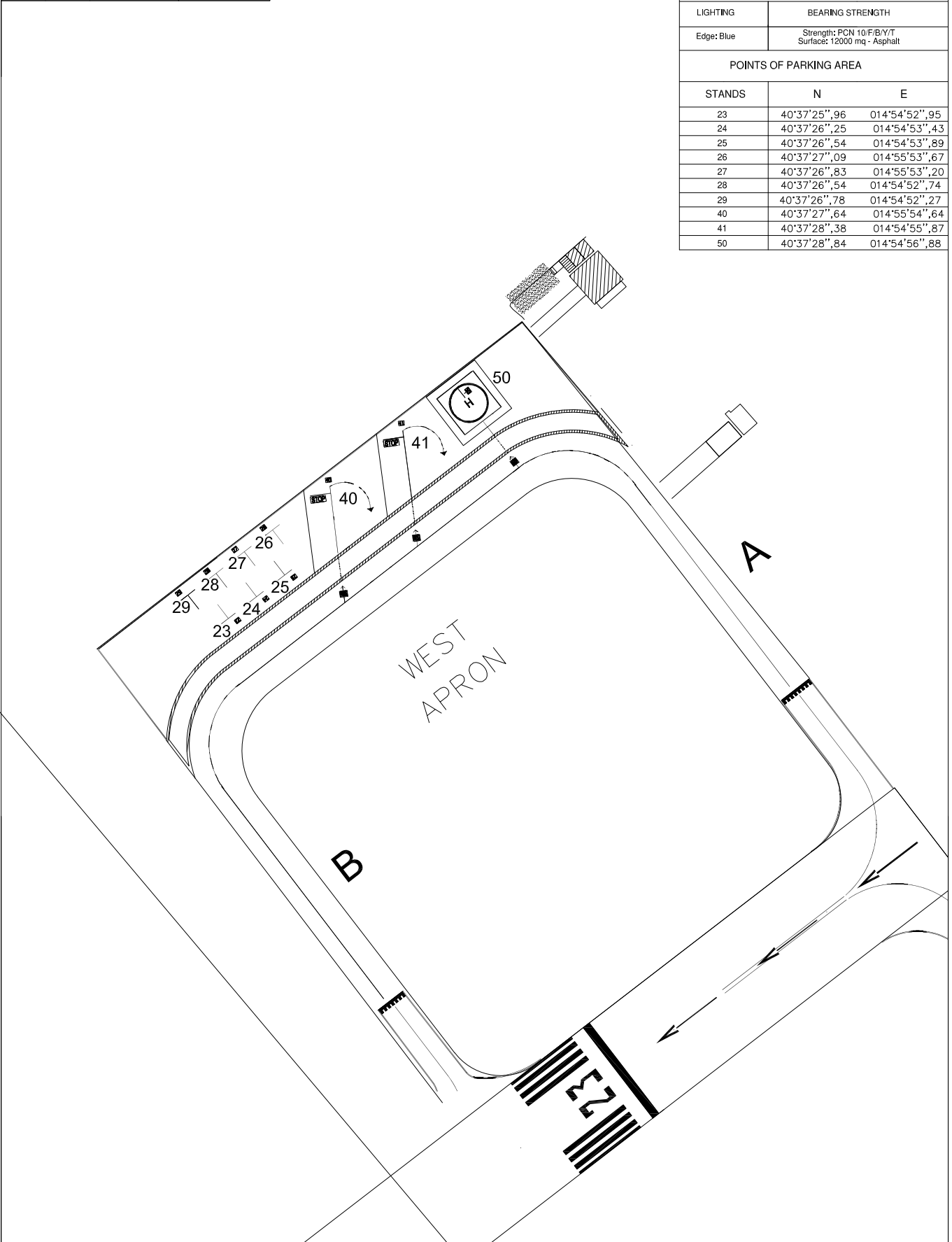


# AIP Italia AIRCRAFT PARKING DOCKING CHART – WEST APRON AD 2 LIRI 2–3

Bearings are magnetic Distances in metres Elevation in ft AMSL Coordinates WGS 84	AFIS	AD ELEV 119	SALERNO/Pontecagnano	
	119.175	APRON ELEV 123	L I R I	40°37'12" N 014°54'45" E

WEST APRON (Stands 23-29, 40, 41, 50)		
LIGHTING	BEARING STRENGTH	
Edge: Blue	Strength: PCN 10/F/B/Y/T Surface: 12000 mq - Asphalt	
POINTS OF PARKING AREA		
STANDS	N	E
23	40°37'25",96	014°54'52",95
24	40°37'26",25	014°54'53",43
25	40°37'26",54	014°54'53",89
26	40°37'27",09	014°55'53",67
27	40°37'26",83	014°55'53",20
28	40°37'26",54	014°54'52",74
29	40°37'26",78	014°54'52",27
40	40°37'27",64	014°55'54",64
41	40°37'28",38	014°54'55",87
50	40°37'28",84	014°54'56",88

CHANGE: Data provider updated

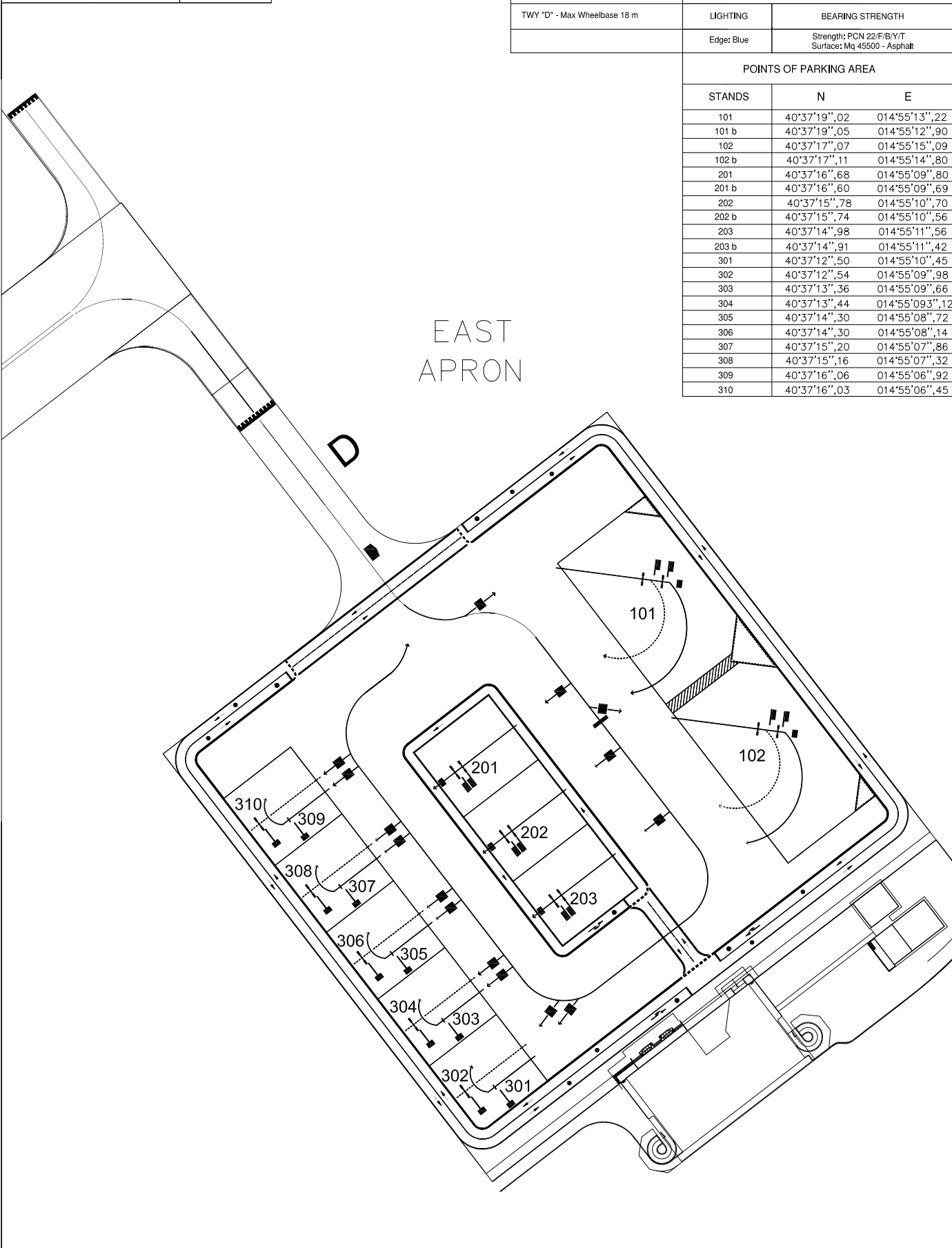


# AIP Italia AIRCRAFT PARKING DOCKING CHART – EAST APRON AD 2 LIRI 2-5

Bearings are magnetic Distances in metres Elevation in ft AMSL Coordinates WGS 84	AFIS 119.175	AD ELEV 119	SALERNO/Pontecagnano	
		APRON ELEV 123	L I R I	40°37'12" N    014°54'45" E

CAA'S PROVISIONS	EAST APRON (Stands 101-102, 201-203, 301-310)	
TWY "D" - Max Wheelbase 18 m	LIGHTING	BEARING STRENGTH
	Edge: Blue	Strength: PCN 22/F/B/Y/T Surface: Mq 45500 - Asphalt

POINTS OF PARKING AREA		
STANDS	N	E
101	40°37'19",02	014°55'13",22
101 b	40°37'19",05	014°55'12",90
102	40°37'17",07	014°55'15",09
102 b	40°37'17",11	014°55'14",80
201	40°37'16",68	014°55'09",80
201 b	40°37'16",60	014°55'09",69
202	40°37'15",78	014°55'10",70
202 b	40°37'15",74	014°55'10",56
203	40°37'14",98	014°55'11",56
203 b	40°37'14",91	014°55'11",42
301	40°37'12",50	014°55'10",45
302	40°37'12",54	014°55'09",98
303	40°37'13",36	014°55'09",66
304	40°37'13",44	014°55'09",12
305	40°37'14",30	014°55'08",72
306	40°37'14",30	014°55'08",14
307	40°37'15",20	014°55'07",86
308	40°37'15",16	014°55'07",32
309	40°37'16",06	014°55'06",92
310	40°37'16",03	014°55'06",45



CHANGE: Data provider updated